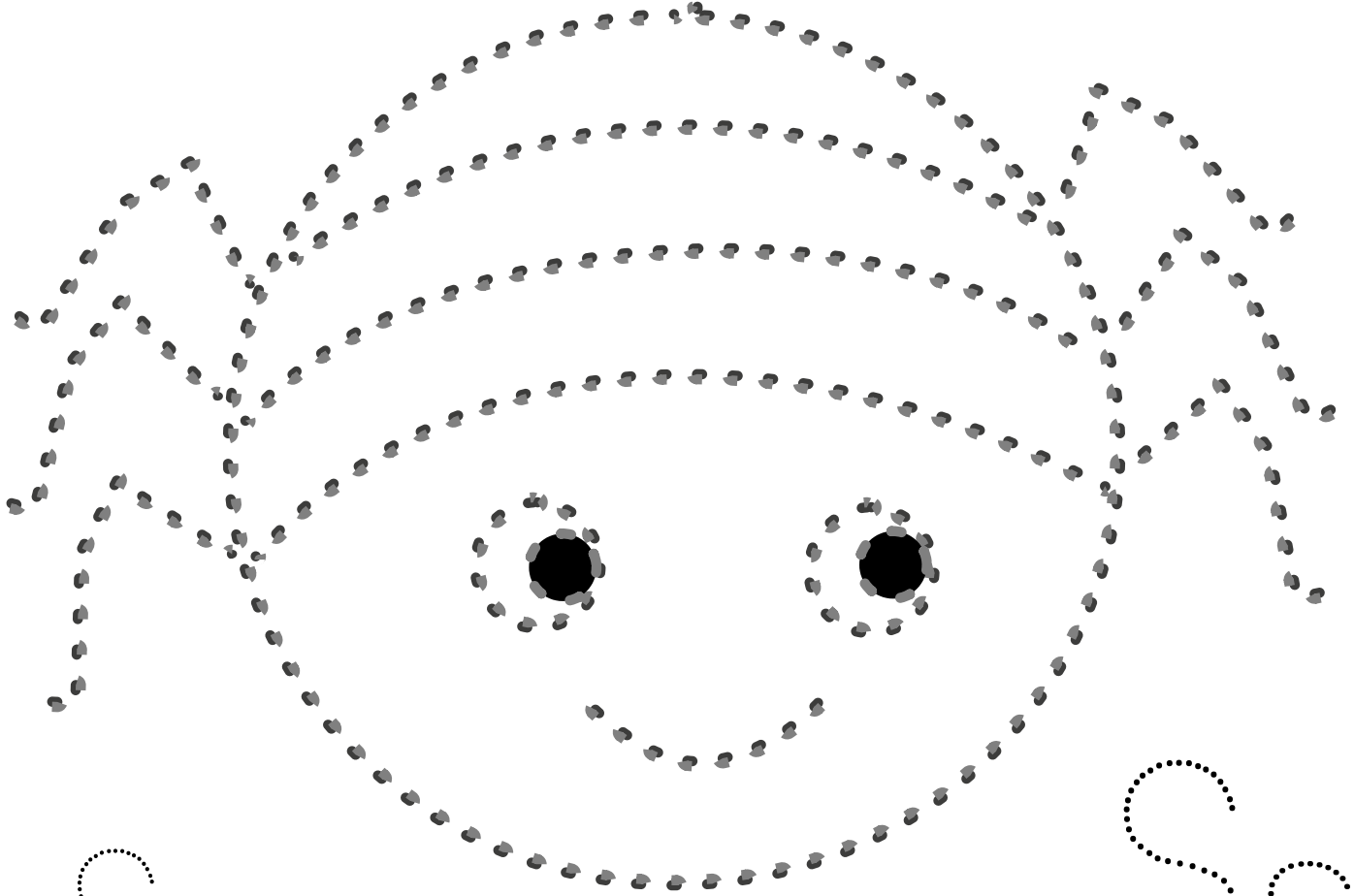


S s

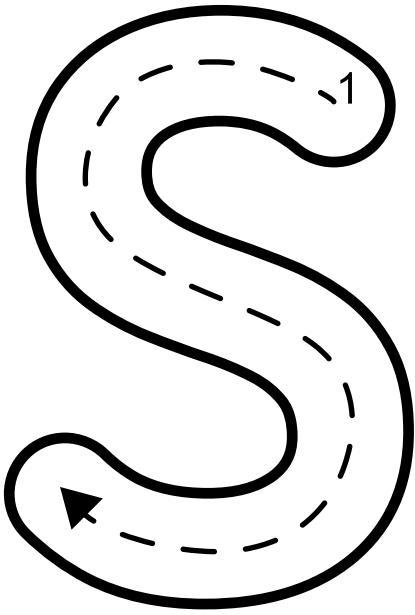
S s



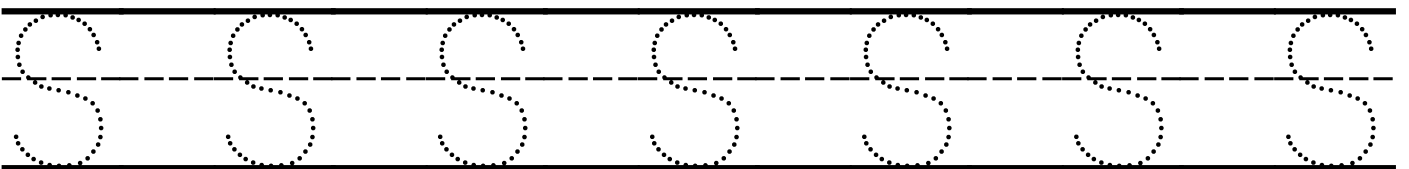
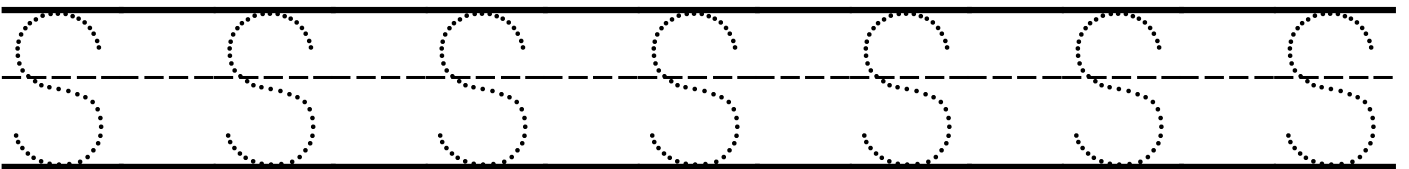
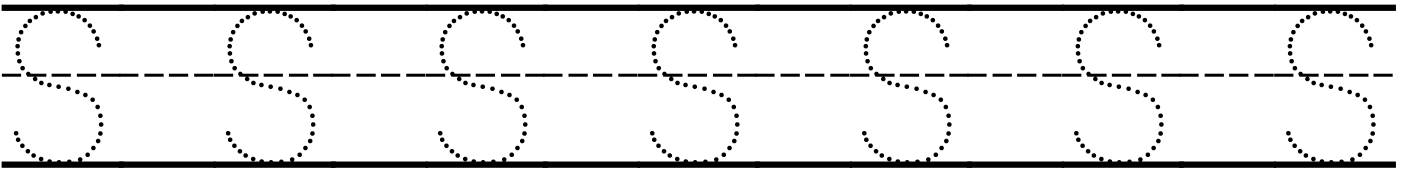
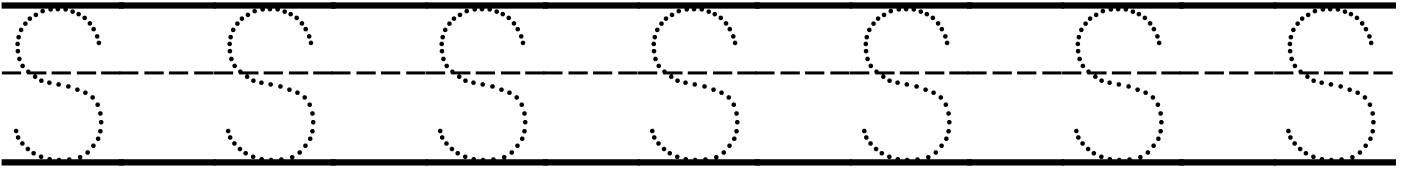
S s

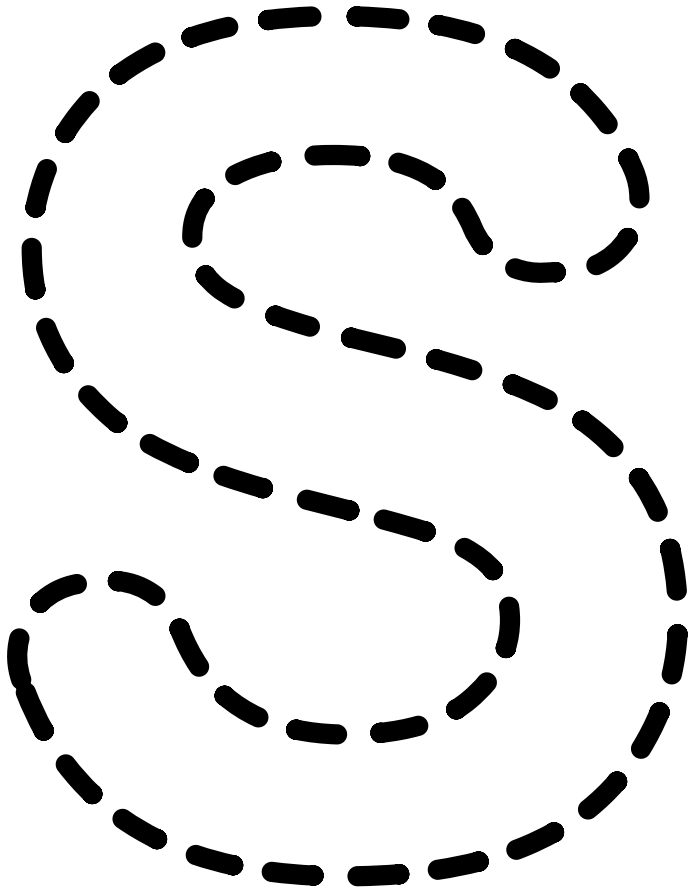
S s

spider



S is for Spider





\_pider  
S\_ider  
Sp\_der  
Spi\_er  
Spid\_r  
Spide\_

Spider

Spider

Spider

Spider

Spider

Spider

Spider

Spider

Spider

Spider

Spider

Spider

Spider

Spider

Spider

Spider

Spider

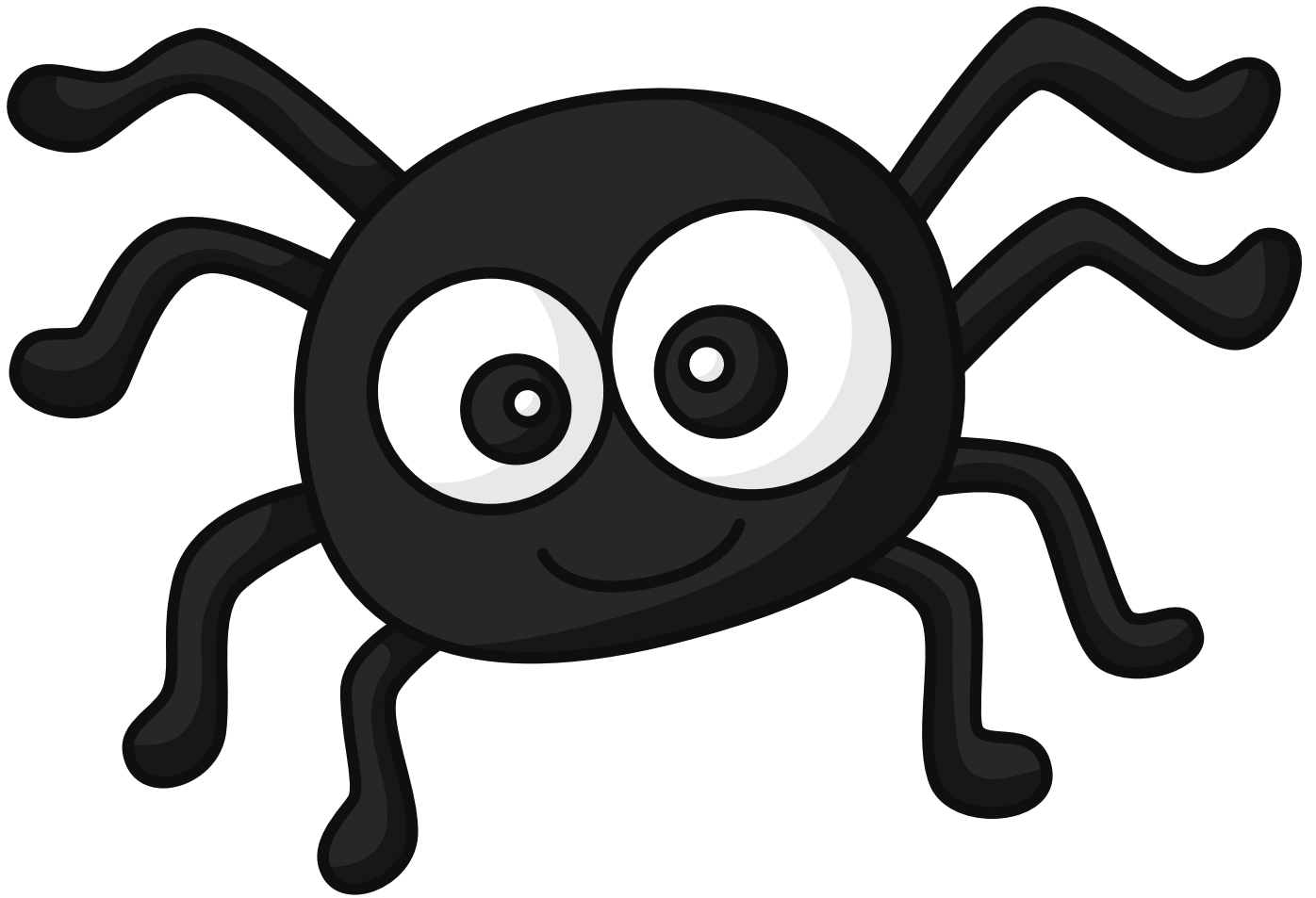
Spider

Spider

Spider

Spider

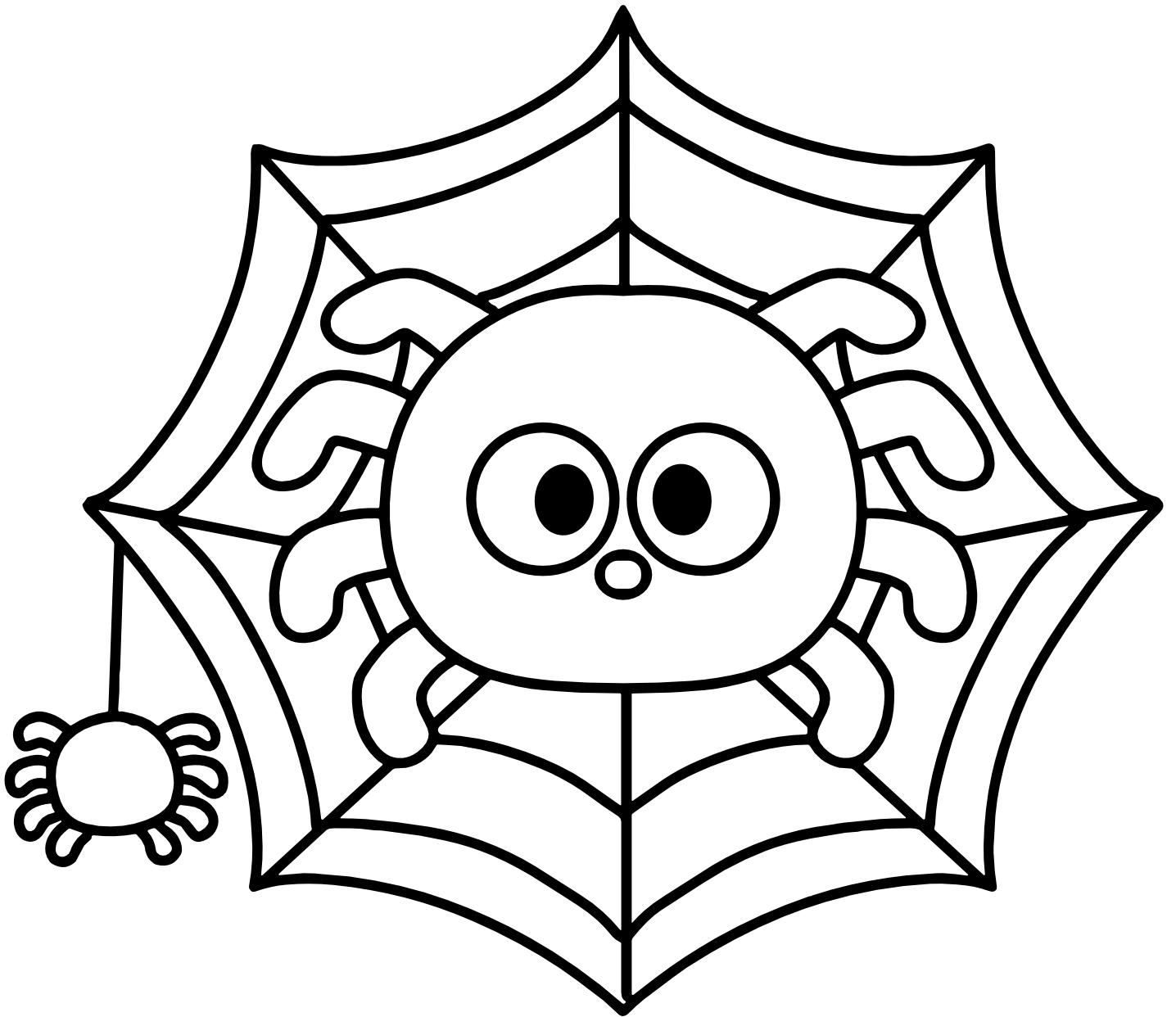
# spider



Fill in the missing letters.

s	p	i	d	e	r
s	p		d		r
		i		e	

# Spell the Word



D R S E I P

--	--	--	--	--	--